

# Minimize scrap, save money

## – A present-day example from industrial experience –

### The customer's problems:

- Difficult granular rock material, with agglomerates
- No disintegration in a planetary mixer
- Insufficient mixing of facing concretes
- Too much scrap
- Unsatisfactory mixing of small batches
- Intended brick design is not achievable



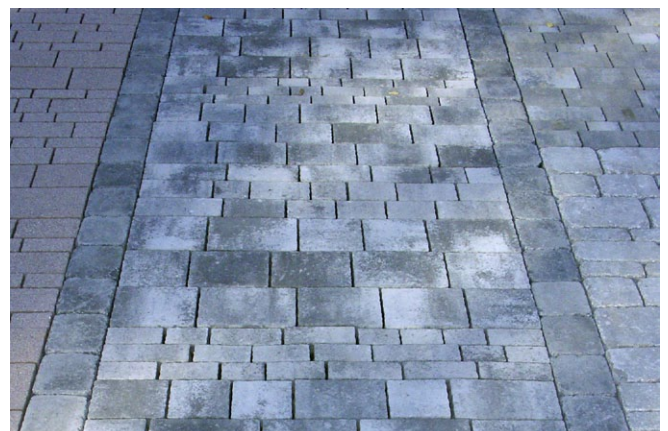
### The solution to these problems:

Replacement of the mixer by an intensive mixer with inclined mixing pan



### The customer's feedback:

- Agglomerates in granular rock material are disintegrated without any problems
- Excellent mixing of facing concretes, minimal scrap
- Good mixing of small batches
- Intended brick design is perfectly achievable
- Substantially shorter mixing times



**Top-name manufacturers around the world work with EIRICH mixing technology.  
We would be glad to provide references on request. EIRICH is a research partner for universities.  
Put us to the test. We would be glad to tell you more.**